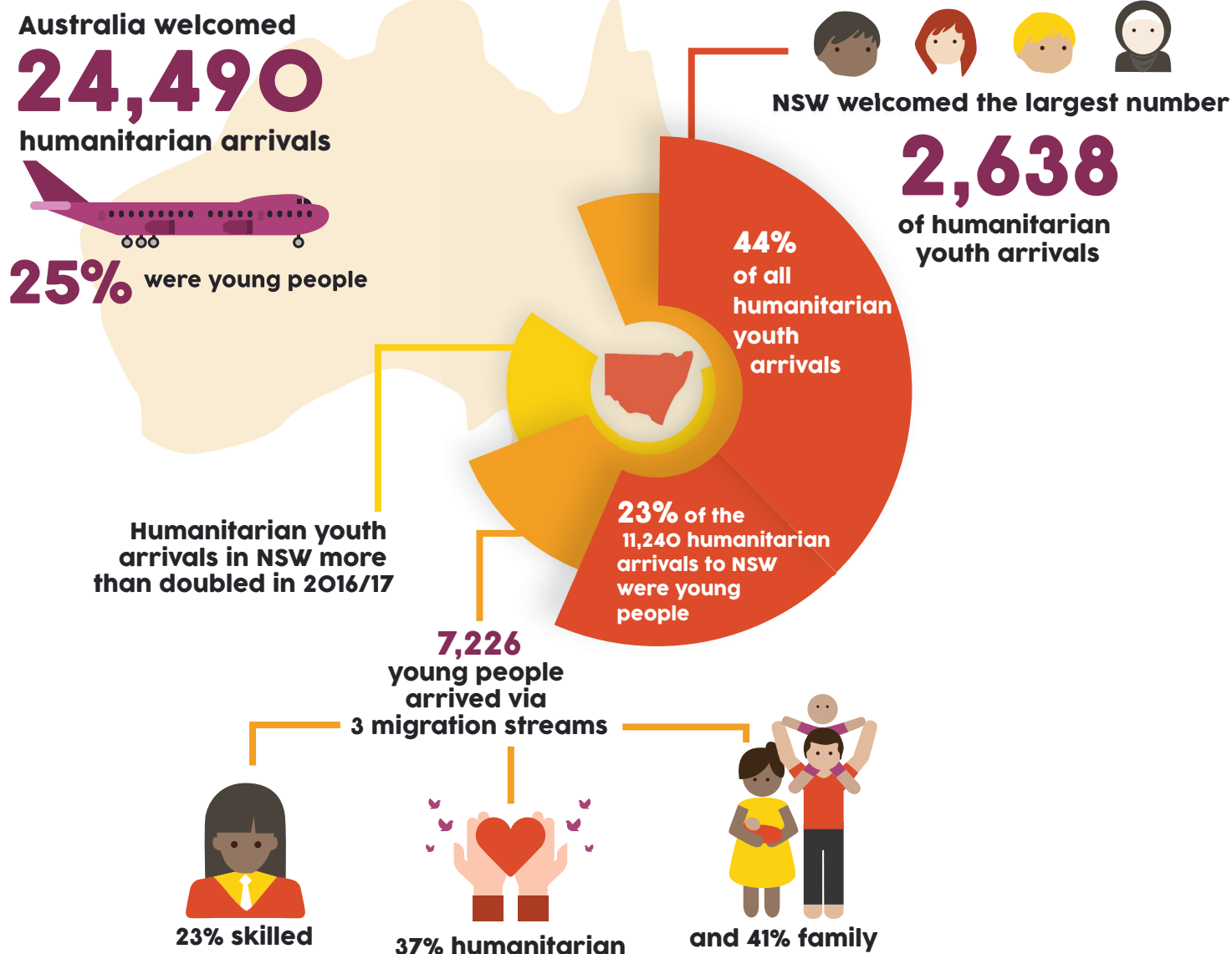


# Snapshot: Humanitarian Youth Arrivals to NSW

1 July 2016 – 30 June 2017



## HUMANITARIAN YOUTH ARRIVALS

### AGE ON ARRIVAL

12-15 years **32%**

16-17 years **15%**

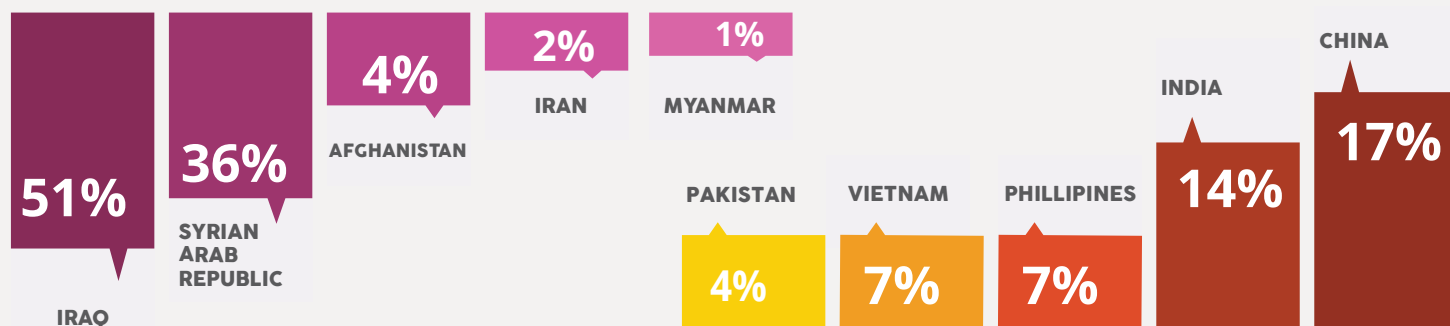
18-24 years **53%**

**49% FEMALE**

**51% MALE**

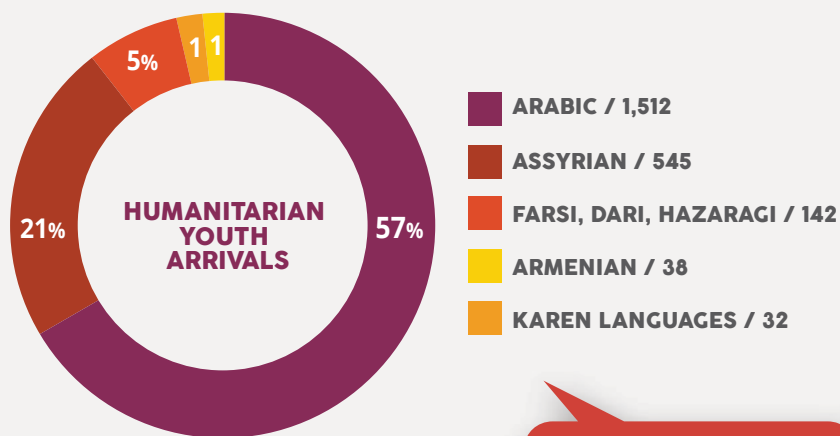
## TOP 5 COUNTRIES OF BIRTH

### HUMANITARIAN YOUTH ARRIVALS



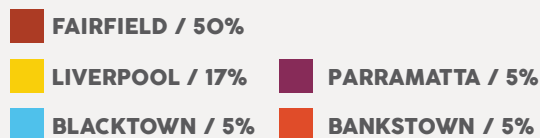
### SKILLED & FAMILY YOUTH ARRIVALS

## TOP 5 LANGUAGES

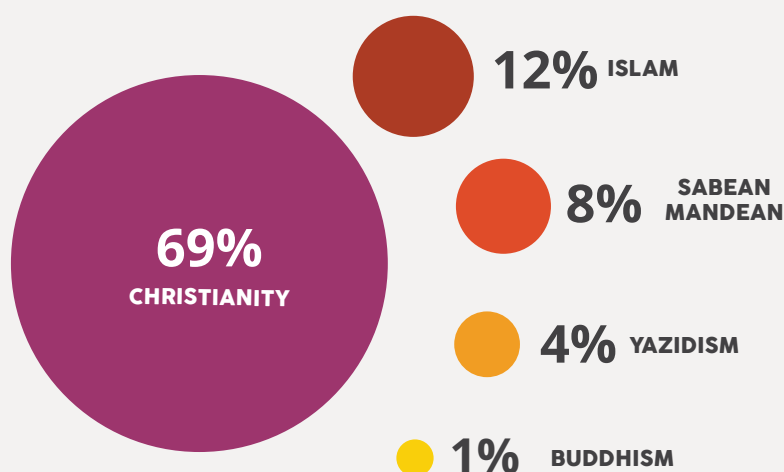


90% of humanitarian youth arrivals in NSW had nil or poor English proficiency.

## TOP 5 LOCAL GOVT AREAS FOR HUMANITARIAN YOUTH ARRIVALS



## TOP 5 RELIGIONS OF HUMANITARIAN YOUTH ARRIVALS



MYAN NSW is the first state-wide multicultural youth specialist organisation. The data in this report is sourced from the DSS Settlement Database. There are a number of caveats to consider when reviewing this information.

Details can be found at: <http://bit.ly/2D1Ahmp>